

Cancer Centre of Southeastern Ontario at Kingston General Hospital

Overview:

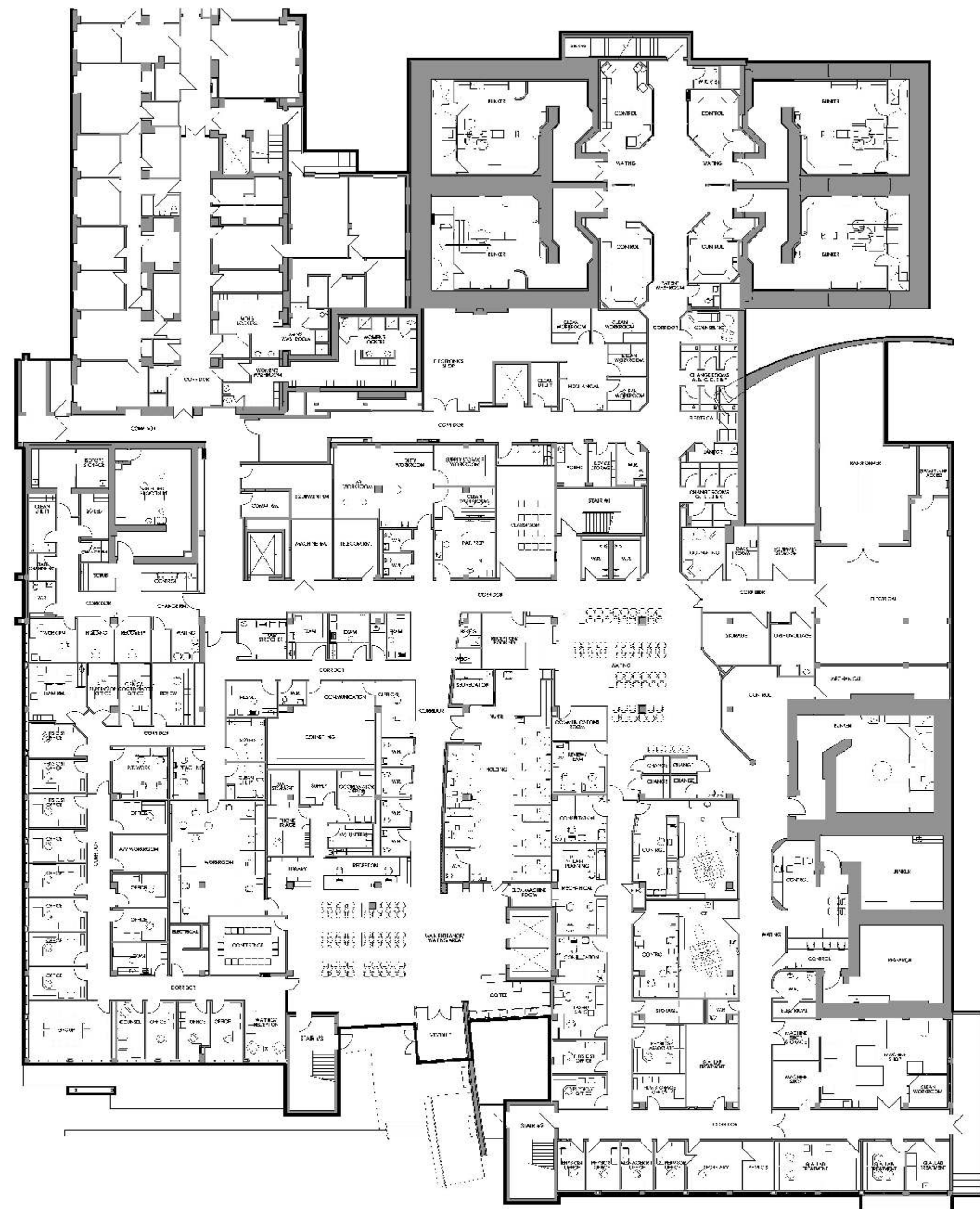
- Complete renovation
- Expansion from 54,445 to 91,085 square feet
- 2 new radiation treatment bunkers
- Double the chemotherapy space from 15 treatment spaces to 39
- Separate clinic area for children and youth

What's Happening (Highlights only):

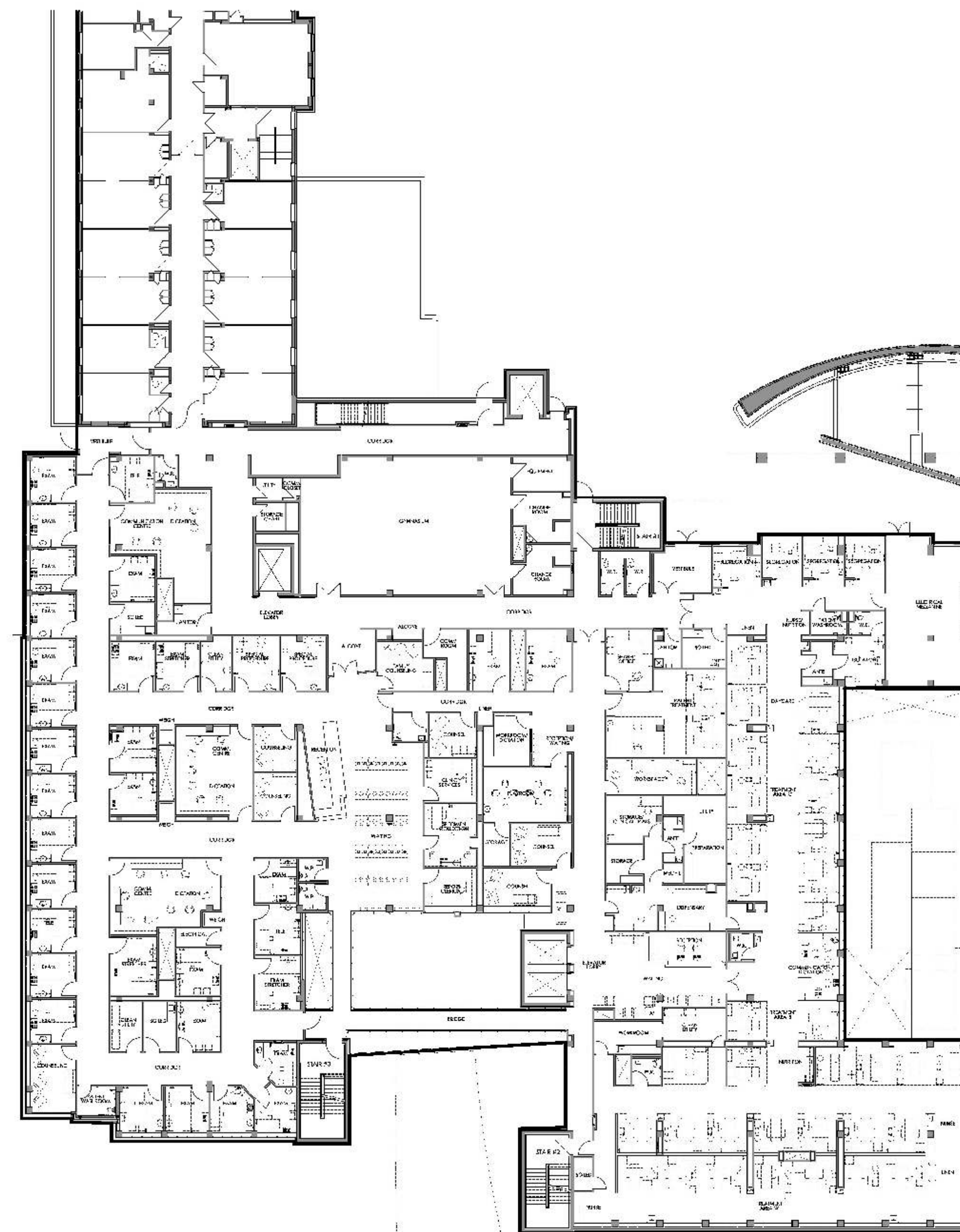
- Phase 1 – Elevator retrofit & construction of new bunkers and new electrical room; several offices and Burr gym vacated
- Phase 2 – Burr 1 Outpatient clinic moves, modular building currently housing offices removed; new elevator bank built; construction of new chemotherapy suite
- Phase 3 – In-patient pediatrics moves to new unit in Kidd tower; outpatient clinic space constructed
- Phase 4 – Construction of supportive care offices & patient support space
- Phase 5 – New entrance from King Street completed; construction of brachytherapy suite, waiting area and offices

Benefits:

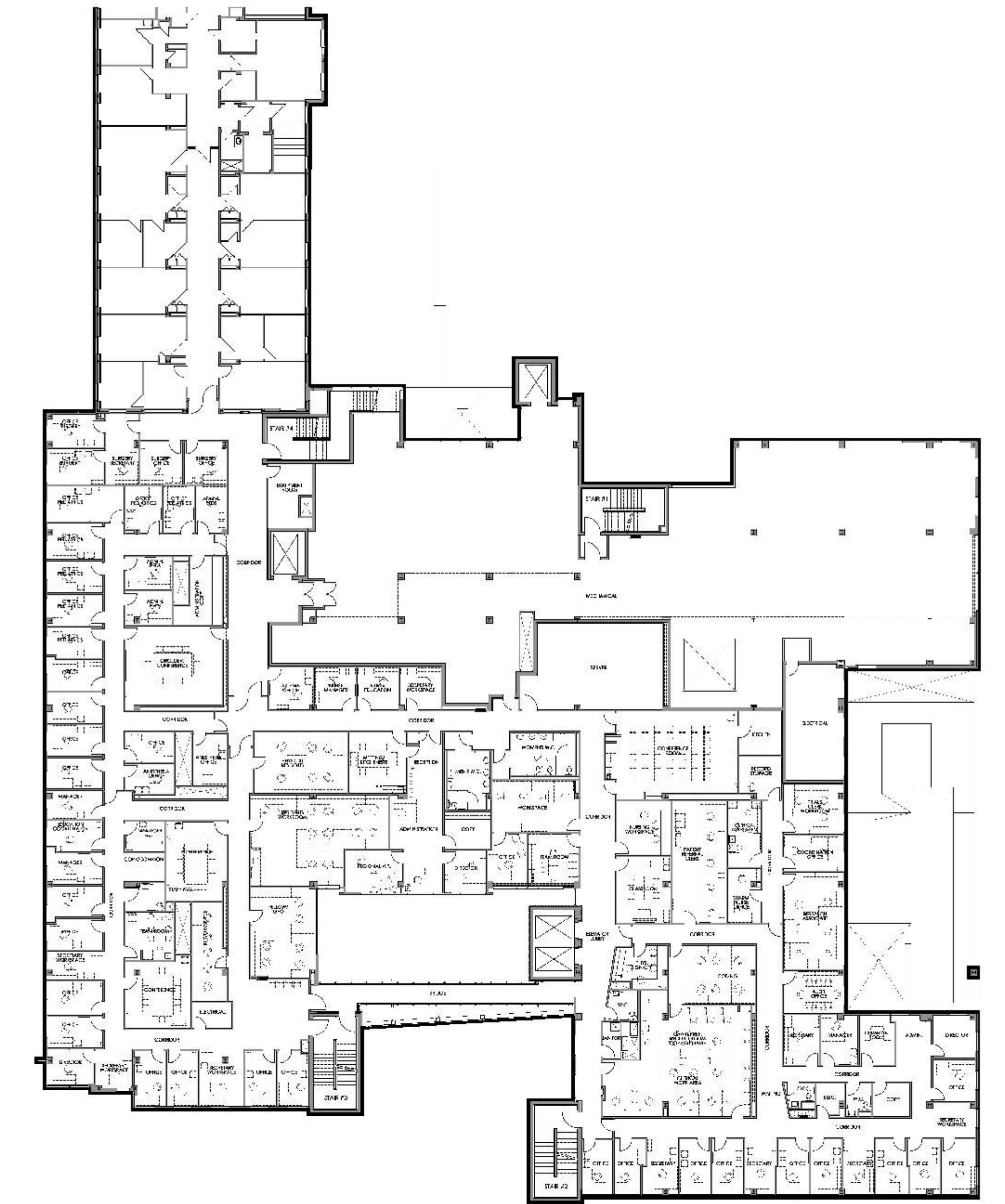
- Improved access to care for growing numbers of people living with cancer
- More comfortable environment designed to enhance privacy and preserve dignity of patients
- Better design to allow for family involvement
- Additional space to support education of health care providers
- Enhanced ability to recruit and retain leading health care professionals
- Vast improvements to the overall environment with more space, more daylight, and more comfortable surroundings for everyone
- Loads of daylight



Burr Level '0'



Burr Level '1'



Burr Level '2'